

# PP ► SEMI-PASSIVE CONVECTOR

FAN CONVECTOR WITH PASSIVE CONVECTOR PROPERTIES AND DOUBLE POWER



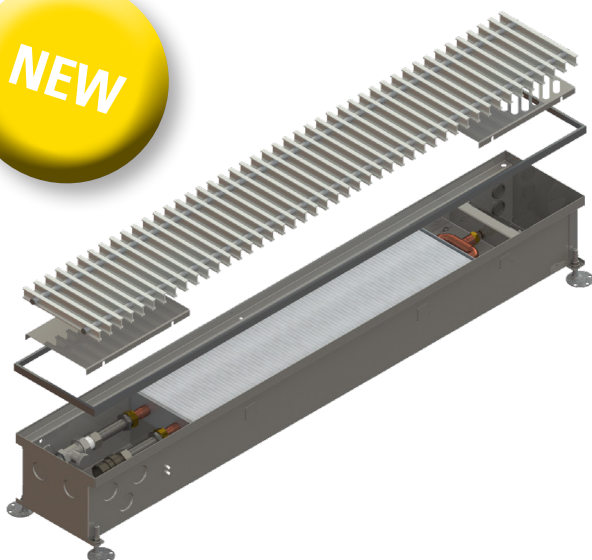
heating



with a fan



dry environment



## CHARACTERISTICS

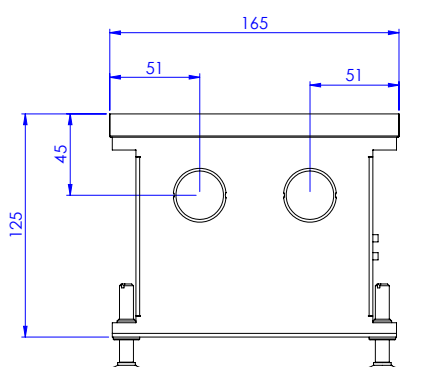
- absolutely noiseless operation (well below the background noise level)
- active air flow
- twice the performance compared to a passive convector
- easy installation without the need for an electrical connection (PTG version)
- regulation by heating medium supply (valve)
- maintenance-free operation

## DIMENSIONS

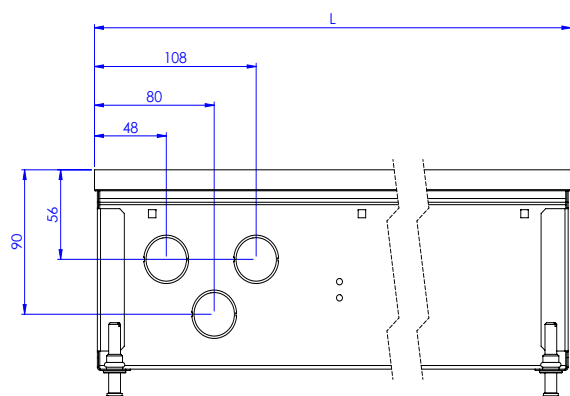
width - with standard frame	165 mm
width - with covering frame	190 mm
height	125 mm
length	900 - 2000 mm
connection *	G1/2"

\* internal thread on the heat-exchanger, without water connection accessories

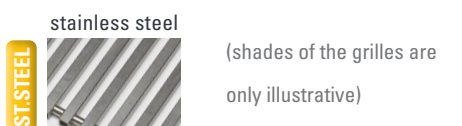
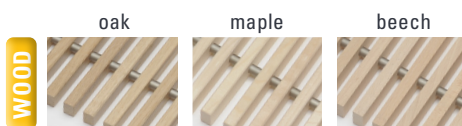
### STRAIGHT CONNECTION



### CORNEOUS CONNECTION BOTH SIDE



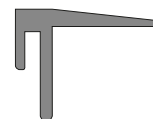
## GRILLES - materials



(shades of the grilles are only illustrative)

## FRAMES

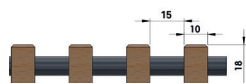
- Standard frame (AL-aluminium)
- Covering frame (AL-aluminium)



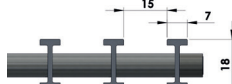
Convectors are designed to the CONCRETE FLOOR, in case of HOLLOW FLOOR installation, please consult with your sales representative.

## GRILLES - profile

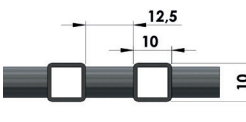
- wood-rolling-sparse



- AL-rolling-sparse



- st.steel-rolling-sparse<sup>1)</sup>



1) the grille must be ordered with the convector due to the modification of the convector construction

Standard grilles are transverse, if you are interested in **LONGITUDINAL GRILLES**, please contact your sales representative.

## HEATING OUTPUT

heating output Q [W]			
length L [mm]	input / output water temperature [°C]	fan	
		off	on
		air temperature t <sub>A</sub> = 20°C	
09 = 900	85/75	106	740
	75/65	88	611
	65/55	69	483
	45/40	38	264
10 = 1000	85/75	128	750
	75/65	106	619
	65/55	84	489
	45/40	46	267
12 = 1250	85/75	184	774
	75/65	152	639
	65/55	120	505
	45/40	65	276
15 = 1500	85/75	239	801
	75/65	197	661
	65/55	156	523
	45/40	85	285
17 = 1750	85/75	294	1403
	75/65	243	1158
	65/55	192	916
	45/40	105	500
20 = 2000	85/75	350	1499
	75/65	288	1238
	65/55	228	979
	45/40	125	534

The technical parameters are set according to the relevant standards. In fact, they may vary depending on the location of the convector, the cover grille, the connection type.

The standard delivery includes convector and anchoring accessories. All other accessories (grille, connection accessories, control elements, etc.) must be ordered and specified separately.

As a part of the product development, MINIB, a.s. reserves the right of construction and price adjustments.

## CONNECTION OPTIONS AND ACCESSORIES

- connection **WITHOUT HEAD**
- connection **WITH ELECTROTHERMAL HEAD**
- connection **WITH CUSTOMER HEAD** (after consultation)

The type of connection accessories varies according to the type and purpose of the convector. Connection accessories are packed separately and are not included in the standard convector delivery. Information on request from your sales representative or on our website.

WITHOUT head		READY for head	
straight	corneous	straight	corneous
PA <sup>1)</sup>	PE <sup>1)</sup>	PI <sup>2)</sup>	PM <sup>2)</sup>

<sup>1)</sup> due to small size of the convector, it is necessary to take into account less space for connection accessories

<sup>2)</sup> only with electrothermic head

## ACOUSTIC PRESSURE

Equivalent acoustic pressure level LAeq,2m [dB]

<30dB for all lengths

measurement at a distance of 2m from the noise source at 1m height

INDIVIDUAL CALCULATION  
of technical data you can  
find on our website.

